



Informazioni

Dimensioni motori winch:

- h 33 x 24,4 x 19 cm

Range voltggio:

- 90 - 264 VAC

Range frequenza:

- 47 - 63 Hz

Potenza:

- 0.95 / 230 VAC

Corrente di innesco:

- 6A / 230 V

Consumo di energia:

- 84 W

Peso:

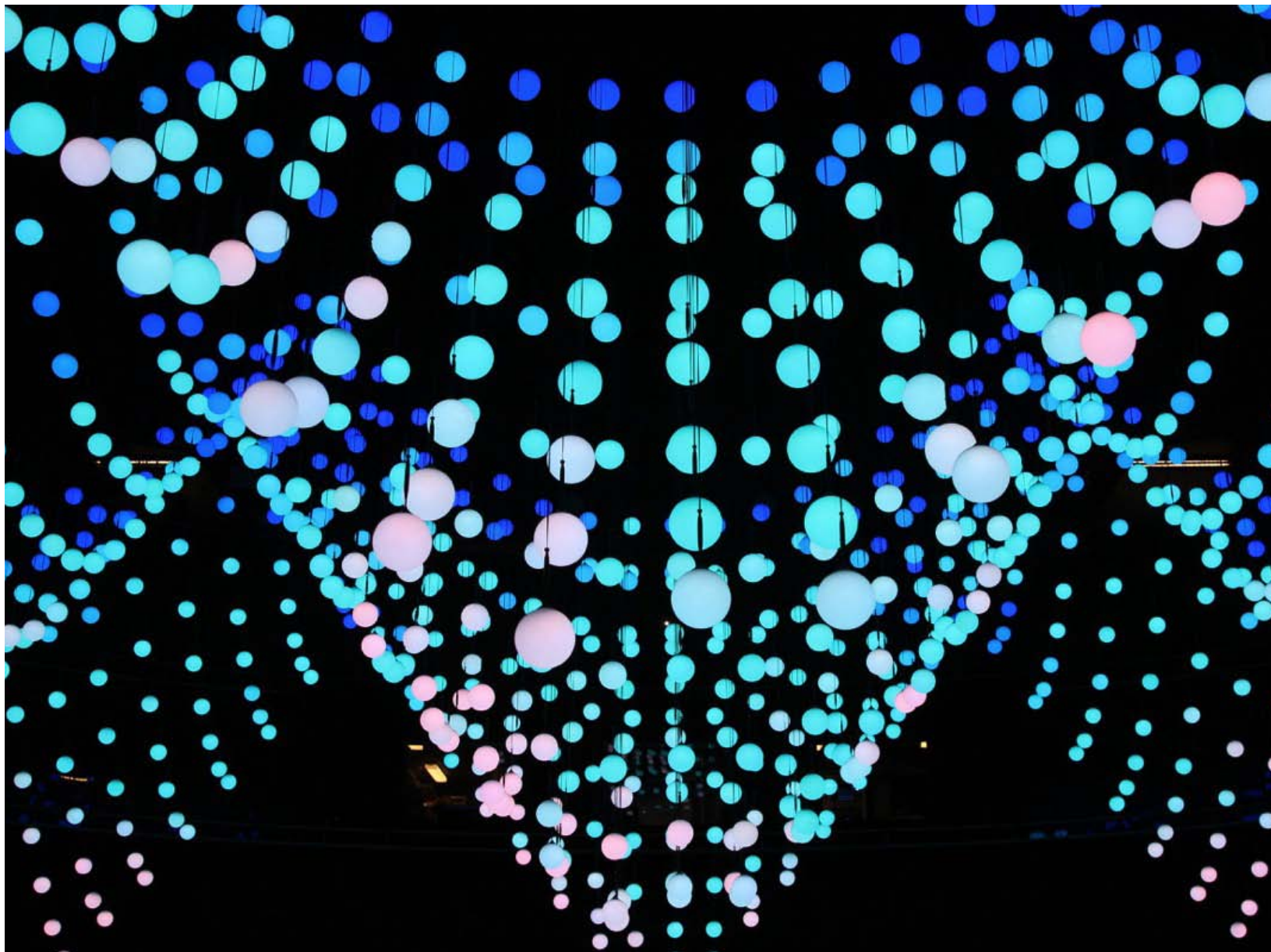
- 7,6 kg


Load capacity:

- 1,7 kg

Oggetti appendibili:

- Sfere RGB
- Custom su richiesta
- Dynamic Led



| | | |
|---|--------------------------|--|
|  ALLESTIMENTI E SCENOGRAFIE | DATA SHEET | |
| | PRODUCT: WINCH 9000 | |
| | RELEASE: 1.1.3 | |
| | LAST UPGRADE: 22/12/2016 | |

| | | |
|--------------------|-------------------|-------------|
| POWER INPUT | VOLTAGE RANGE | 90 ~ 264VAC |
| | FREQUENCY RANGE | 47 ~ 63Hz |
| | POWER FACTOR | 0.95/230VAC |
| | EFFICIENCY | 90% |
| | INRUSH CURRENT | 6A/230V |
| | POWER CONSUMPTION | 84W |

| | | |
|--------------|----------------------|---|
| OTHER | OVER TEMPERATURE | Shut down o/p voltage, recovers automatically after temperature goes down |
| | WORKING TEMP. | (-6 ~ +60°C) |
| | ISOLATION RESISTANCE | I/P-O/P, I/P-FG, O/P-FG:100M Ohms / 500VDC / 25°C/ 70% RH |
| | EMC EMISSION | Compliance to EN55022 (CISPR22), EN61000-3-2,-3 |
| | PROTECTION RATING | IP33 |

| | | |
|---------------------|---------------|---------------------------------|
| MOTOR ENGINE | TYPE | Brushless 3 Phase Motor |
| | SPEED | 1,2 m/s |
| | BRAKE | Safety Hook - Over Speed system |
| | TRANSMISSION | Nylon Belt |
| | LOAD CAPACITY | 1,7 Kg |

| | | |
|----------------------|----------------------|--------------------------|
| MOTOR CONTROL | TYPE | sACN Streaming ACN E1.31 |
| | PARAMETER CONTROL | 8-16 bit |
| | POSITIONING ACCURACY | about 20 mm |
| | ENCODER | IR Rotary Encoder |
| | UP LIMIT | Cam Limit Switch |

| | | |
|--------------|---------------|--|
| CABLE | MATERIALS | HEAVY DUTY NYLON CABLE WHIT INSIDE 5 TWISTED COPPER WIRE |
| | LENGHT | 8,83 mt - 29 ft |
| | BREAKING LOAD | 18,7 kg |
| | DYNAMIC LOAD | 6,3 kg |
| | STATIC LOAD | 9 kg |

| | | |
|---------------------------------|------------|----------------------|
| DIMENSIONS AND EXTERIORS | DIMENSIONS | 330x244x190mm |
| | WEIGHT | 7,6 Kg |
| | COVER | EPOXY BLACK COVERAGE |
| | MOUNT | 50 mm TRUSS CLAMP |

| | | |
|-----------------------|---------------------|------------|
| CERTIFICATIONS | Machinery Directive | 2006/42/EC |
| | Approval | CE - UL |



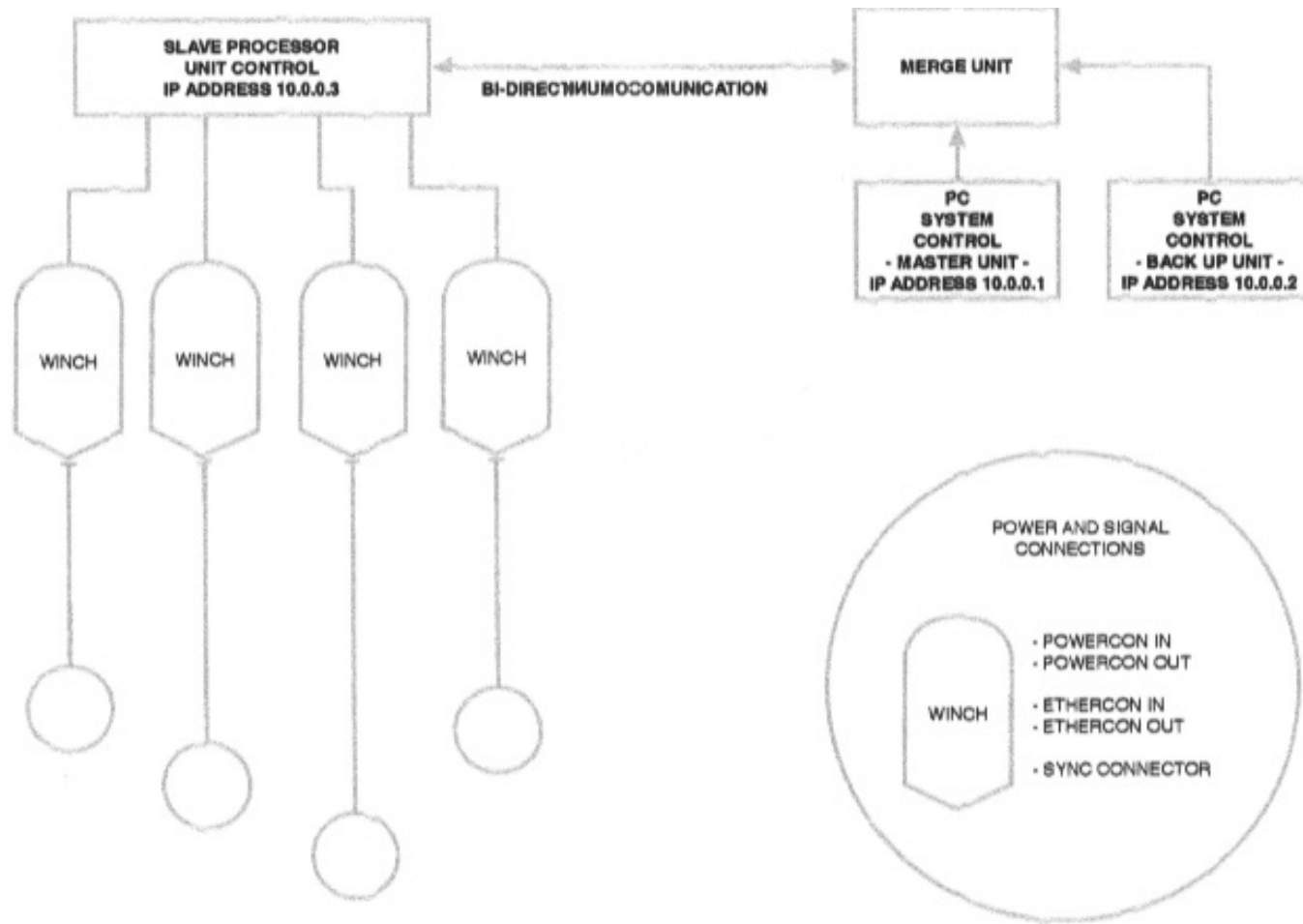


DIAGRAM CONNECTIONS
WINCH 8000
V 1.0

Kinetic Systems

User manual



- Running without hanging any light-emitting equipment is strictly prohibited.
- After installation, don't lift the LED ball up with your hand any time

KEEP THIS MANUAL FOR TUTURE NEEDS



CONTENTS

| | |
|---------------------------------|-----|
| 1.Overview..... | 2 |
| 2.Safety Guidelines..... | 2 |
| 3.Warning..... | 3 |
| 4.Basic Configurations..... | 4 |
| 5.Installation Instruction..... | 5 |
| 6.Operating Requirement..... | 6 |
| 7.Menu Illustration..... | 7 |
| 8.Channel Chart..... | 8.9 |
| 9.Technical Specifications..... | 10 |

1. Overview

Thanks for buying our products! Projector unpacking, check whether there is a result of the damage caused by using this lamp, as soon as possible, contact your dealer or manufacturer.

This product meets the following criteria:

GB7000.1-120007/IEC60598-1:2013

GB7000.217-2008/IEC60598-2-17:1984+A2:1990

2. Safety guidelines

Important Notice

All equipments' installation and maintenance must done by professional technical personnel, and strictly follow the instructions to operate and maintain.

The manufacturer shall not be held liable for any failure to manual normal operation use and responsible for unauthorized allowed to modify the device caused any accidents and loss.

Warning

Installation of LED lift color ball must provide enough safety distance and operational distance.

Running without hanging any light-emitting equipment is strictly prohibited.

After installation, don't lift the LED ball up and down with your hand any time



4. Basic configurations



※The following spare parts are not included. if you need, please contact your distributor to purchase them:



5. Installation instruction



Sufficient safety distance must be considered in

Sufficient lifting distance must be considered. Otherwise, the ball may heat the ground or may cause unexpected touches.

Step 1: Installation of lifting machine and clamp



Step 2: Installation of lifting machine and truss



Step 3: Installation of lifting machine and LED color ball



6. Operating requirement

Wire wrapped in the lifting machine when the product out of factory we must hang on the color ball when power on starting lifting machine without hanging LED color ball s strictly prohibited because there is failure when draught line wrapped in the lifting machine without gravity!

Step 1

Start power switch of lifting machine. (Start power switch while performing self-checking and resetting.)

Step 2

Insert DMX signal debug and perform reset uniformly

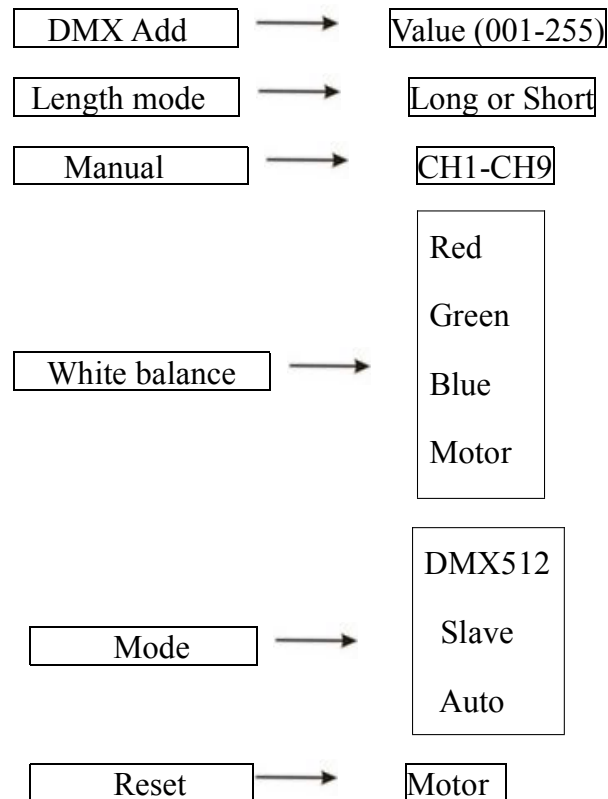


Step 3

Height of all color ball should be same by executing unified reset, make sure LED lift color ball can work normally after ensure all rest normally.



7. Menu illustration (LCD Display)



8.Channel Chart (5CH model:)

| DMX Channel | DMX Value | Specification |
|-----------------|-----------|----------------------------|
| 1.Motor journey | 0-255 | Lifting from top to bottom |
| 2.Speed | 0-255 | Speed from fast to slow |
| 3.Red | 0-255 | Red from dark to bright |
| 4.Green | 0-255 | Green from dark to bright |
| 5.Blue | 0-255 | Blue from dark to bright |

9CH model:

| DMX Channel | DMX Value | Specification |
|-----------------|-----------|--|
| 1.Motor journey | 0-255 | Lifting from top to bottom |
| 2.Motor speed | 0-255 | Lifting speed from fast to slow |
| 3.Dimmer | 0-255 | Master dimmer |
| 4.Strobe | 0-3 | Open |
| | 4-44 | Strobe from slow to fast |
| | 45-65 | Random strobe from slow to fast |
| | 66-106 | Pulse strobe from slow to fast |
| | 107-127 | Random pulse strobe from slow to fast |
| | 128-168 | Fade-in strobe from slow to fast |
| | 169-189 | Random fade-in strobe from slow to fast |
| 5.Red | 190-230 | Fade-out strobe from slow to fast |
| | 231-251 | Random fade-out strobe from slow to fast |
| | 252-255 | close |
| | 0-255 | Red from dark to bright |
| 6.Green | 0-255 | Green from dark to bright |
| 7.Blue | 0-255 | Blue from dark to bright |

WINCH



| | | |
|------------------|---|--|
| 8.COLOR MACRO | 0-4 | No function |
| | 5-9 | Static Color Red |
| | 10-14 | Static color Amber |
| | 15-19 | Static color yellow |
| | 20-24 | Static Color Green |
| | 25-29 | Static Color Cyan |
| | 30-34 | Static Color Blue |
| | 35-39 | Static Color Magenta |
| | 40-44 | Static Color White |
| | 45-49 | No function |
| | 50-94 | Eight color step at 9 speeds |
| | 95-99 | No function |
| | 100-149 | Eight color fade at 5 speeds |
| | 150-154 | No function |
| | 155-166 | Red+Green from dark to bright |
| | 167-178 | Green+Red from bright to dark |
| | 179-190 | Green+Blue from dark to bright |
| | 191-202 | Blue+Green from bright to dark |
| | 203-214 | Blue+Red from dark to bright |
| | 215-226 | Red+Blue from bright to dark |
| 227-238 | RGB from dark to bright | |
| 239-250 | Blue+Red from dark to bright at the same time green from bright to dark | |
| 251-255 | Output 100% at the same time | |
| 9.CONTROL | 000-127 | No function |
| | 128-240 | auto programs |
| | 241-245 | put a no function value between the front and end of the reset value |
| | 246-250 | to reset once channel is held at this value for 3seconds |
| | 251-255 | put a no function value between the front and end of the reset value |

9. Technical Specifications:

Power supply: 100-240V, 50-60Hz Power consumption: 120W
 Channel: 5CH/9CH Maximum quantity in series: 20 units
 Operation menu: LCD screen display
 Ball size: 15/20/25/35CM
 LED source for balls : 42PCS TRI SMD LED

Big tube size:length 1M*diameter 10CM (Vertical)
 LED source: 96PCS TRI SMD LED

small tube size:length 1M*diameter 5CM(can make Triangle or parallelogram)
 LED source: 48PCS TRI SMD LED
 All the winches are made of 3 phase motor.

3M winch information as below:

G.W: 14.5KG (2in1)
 Outline size: 252*230*125MM
 Packing size: 565*325*205MM(2in1)

6M,9M winches information:

G.W: 18.5KG(2in1)
 Outline size: 292*292*126MM
 Packing size: 365*360*365MM(2in1)

12M winches information :

G.W: 10.5KG
 Outline size: 324*324*125MM
 Packing size: 400*400*205MM

packing size of 15CM ball: 680*530*525MM (36in1)
 packing size of 20CM ball : 690*445*460MM(12in1)
 packing size of 25CM ball: 835*545*565MM (12in1)
 packing size of 35CM ball: 360*360*370MM (1in1)
 packing size of big tube: 1055*475*500MM (16in1)
 packing size of small ball: 1120*440*295MM(24in1)